

**TOORX**  
FITNESS IN MOTION

# INSTRUCTION



# ERX65



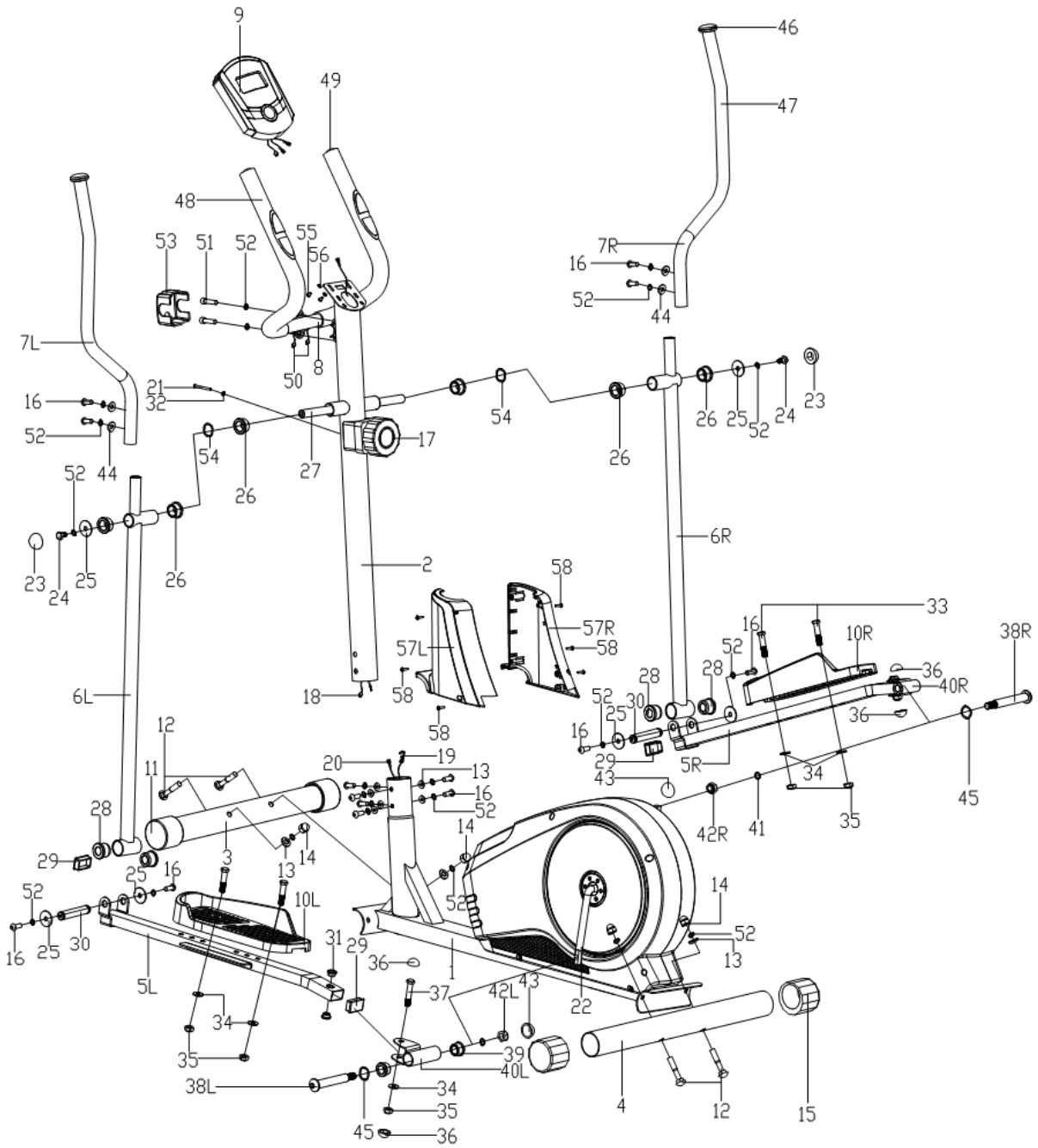
Cod : GRLDTOORXERX65

Rev : 00

Ed : 07/18



# EXPLODED DIAGRAM



## PARTS LIST

NO.	Description	QTY	NO.	Description	QTY
1	Main frame	1	30	Shaft	2
2	Handlebar post	1	31	Bushing Φ14×10×Φ10.1	4
3	Front Stabilizer	1	32	Arc washer	1
4	Rear Stabilizer	1	33	Hex bolt M10×45	4
5L/R	Pedal support	1 pr.	34	Flat washer d10×1.5	6
6L/R	Swing tube	1 pr.	35	Nylon nut M10	6
7L/R	Handlebar	1 pr.	36	Cap S17	4
8	Fixed handlebar	1	37	Hex bolt M10×50	2
9	Computer	1	38L/R	Hinge bolt	1 pr.
10L/R	Pedal	1 pr.	39	Bushing Φ24×20×Φ16.1	4
11	Front end cap	2	40L/R	Connecting joint	1 pr.
12	Carriage bolt M8×76	4	41	Spring washerΦ13×B2	2
13	Arc washer Φ20×Φ8.5×R30	10	42L/R	Nylon nut	1 pr.
14	Acorn nut M8	4	43	Cap S19	2
15	Rear end cap	2	44	Arc washer Φ20×d8.5×R12.5	4
16	Inner hex screw M8×16	14	45	Wave washer D17×0.3	2
17	Tension controller	1	46	End cap	2
18	Extension wire	1	47	Handlebar grip	2
19	Tension cable	1	48	Foam grip	2
20	Sensor wire	1	49	Round capΦ25×1.5	2
21	Cross pan head screw M5X55	1	50	Pulse wire	2
22	Crank	1	51	Inner hex screw M8×30	2
23	Cap S14	2	52	Spring washer D8	22
24	Hex bolt M8×20	2	53	Clamp cover	1
25	Flat washer Φ8.2×Φ32×2	6	54	Wave washer Φ20×Φ28×0.3	2
26	BushingΦ32×2.5	6	55	Cross pan head screw M4X12	2
27	Shaft	1	56	Flat washer	2
28	Bushing	4	57L/R	Front cover	1 pr.
29	Square cap 40×25×1.5	4	58	Cross tapping screw ST4.2×18	6

## **NOTE:**

Most of the listed assembly hardware has been packaged separately, but some hardware items have been preinstalled in the identified assembly parts. In these instances, simply remove and reinstall the hardware as assembly is required.

Please reference the individual assembly steps and make note of all preinstalled hardware.

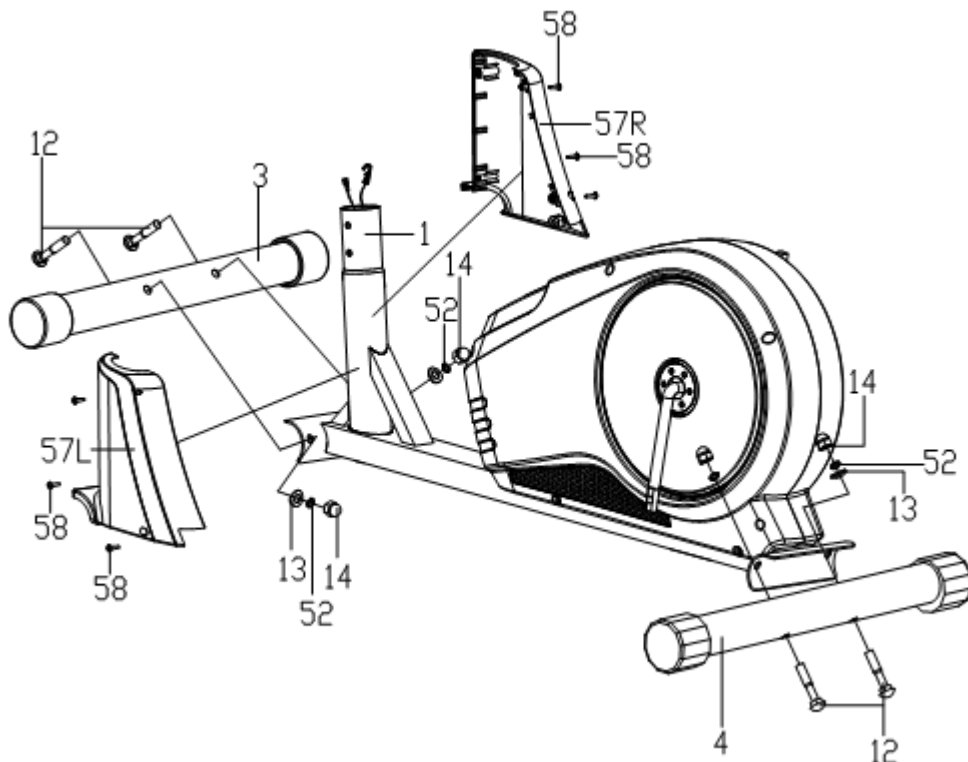
**PREPARATION:** Before assembling, make sure that you will have enough space around the item; Use the present tooling for assembling; Before assembling please check whether all needed parts are available.

It is strongly recommended this machine to be assembled by two or more people to avoid possible injury.

## **ASSEMBLY INSTRUCTIONS**

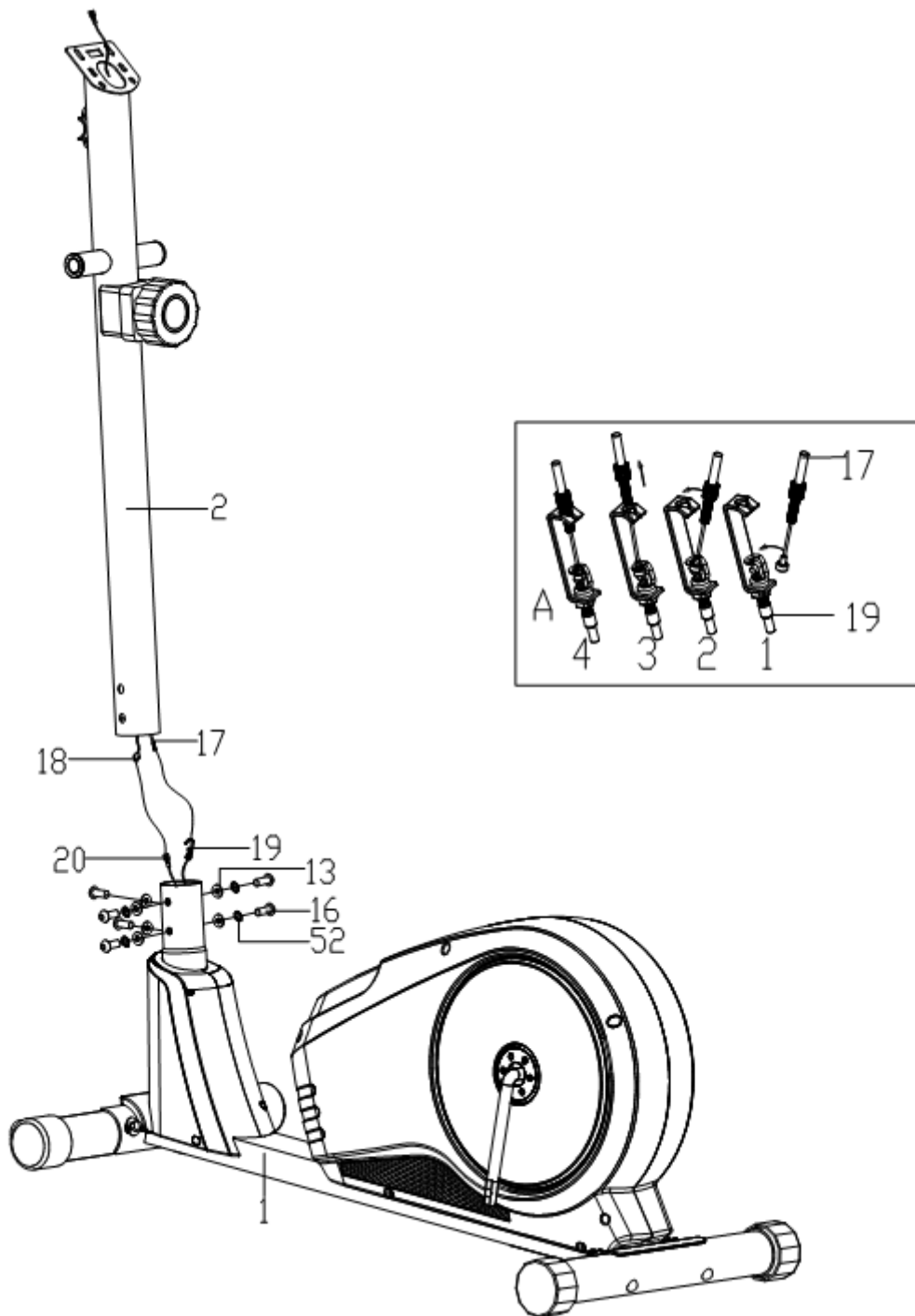
### **STEP 1:**

1. Tighten the front and rear stabilizers (3 & 4) to the main frame (1) with carriage bolts (12), spring washers (52), arc washers (13) and acorn nuts (14).
2. Fix the front cover (57L/R) to the main frame (1) with cross tapping screw (58)



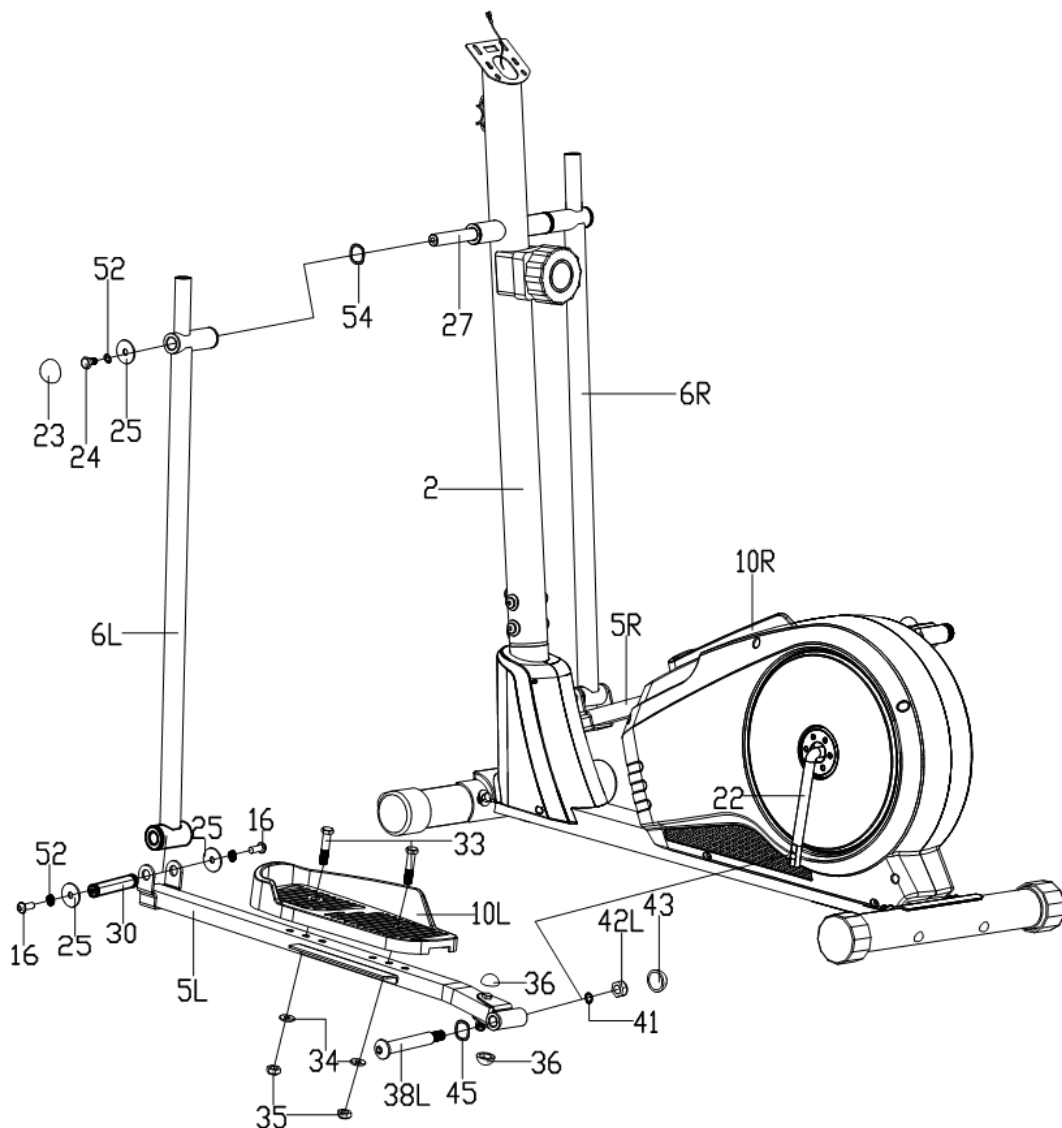
**STEP 2:**

Connect extension wire (18) to sensor wire (20) together, and then connect the cable of tension controller (17) to the hook of the tension cable (19) as shown in picture A. At last, tighten the handlebar post (2) to the main frame (1) with inner hex bolts (16), spring washers (52) and arc washers (13).



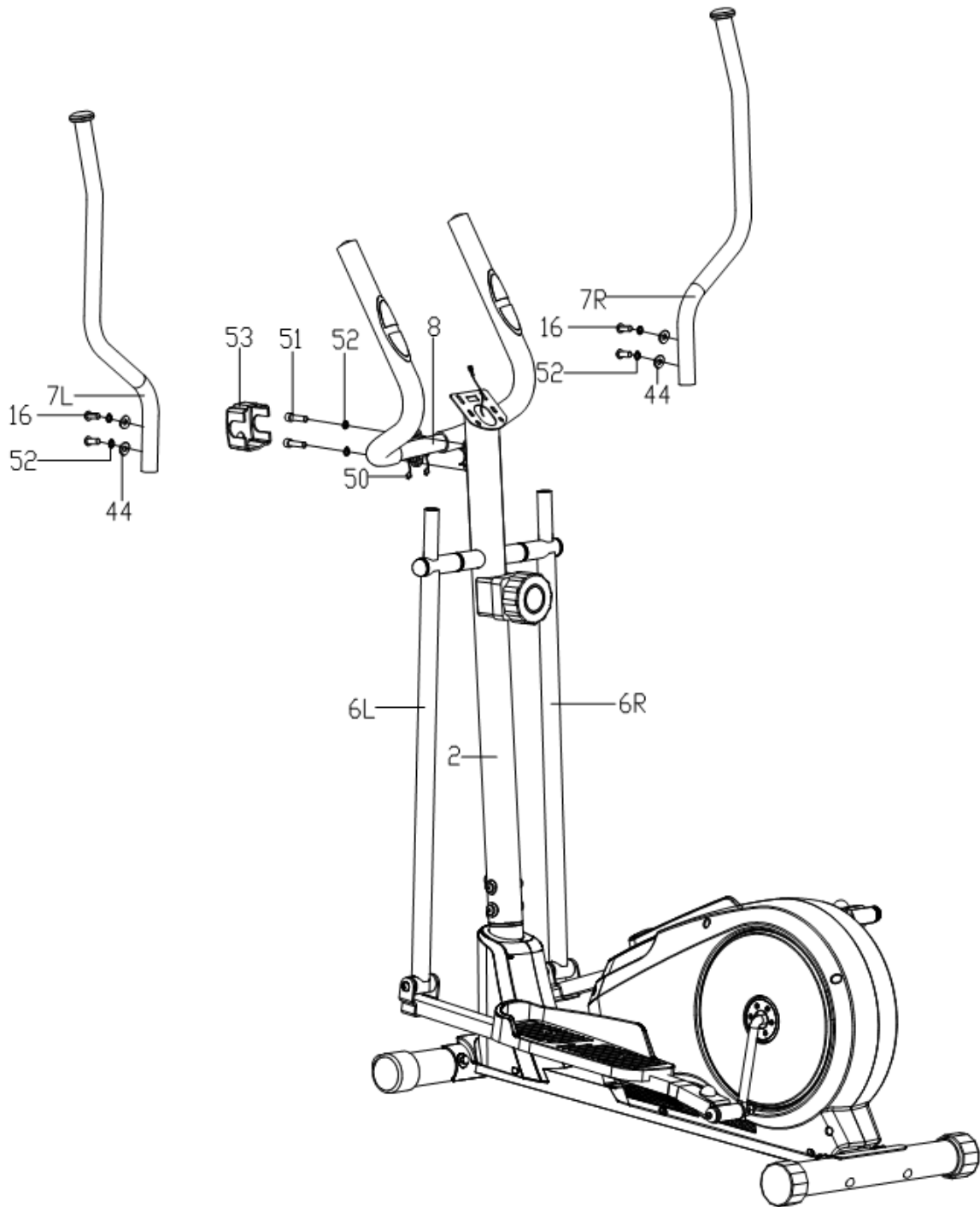
### STEP 3:

1. Insert the shaft (27) through the handlebar post (2), put on the wave washer (54) and then insert the left swing tube (6L) to the left side of shaft (27). At last, fix it with flat washer (25), spring washer (52) and hex bolt (24).  
Note: Please don't tighten them for now.
2. Attach the left pedal support (5L) to the left crank (22) with left hinge bolt (38L), wave washer (45), spring washer (41) and nylon nut (42L).  
Note: Please don't tighten them for now.
3. Attach the left swing tube (6L) to the left pedal support (5L) with bushing (30), flat washer (25), spring washer (52) and inner hex screw (16). Then tighten the hex bolt (24), inner hex bolt (16) and left nylon nut (42L). At last, cover the caps (23, 43 & 36).
4. Repeat the above steps to assembly the right side.
5. Tighten the pedals (10L/R) to the pedal supports (5L/R) with hex bolts (33), flat washers (34) and nylon nuts (35).



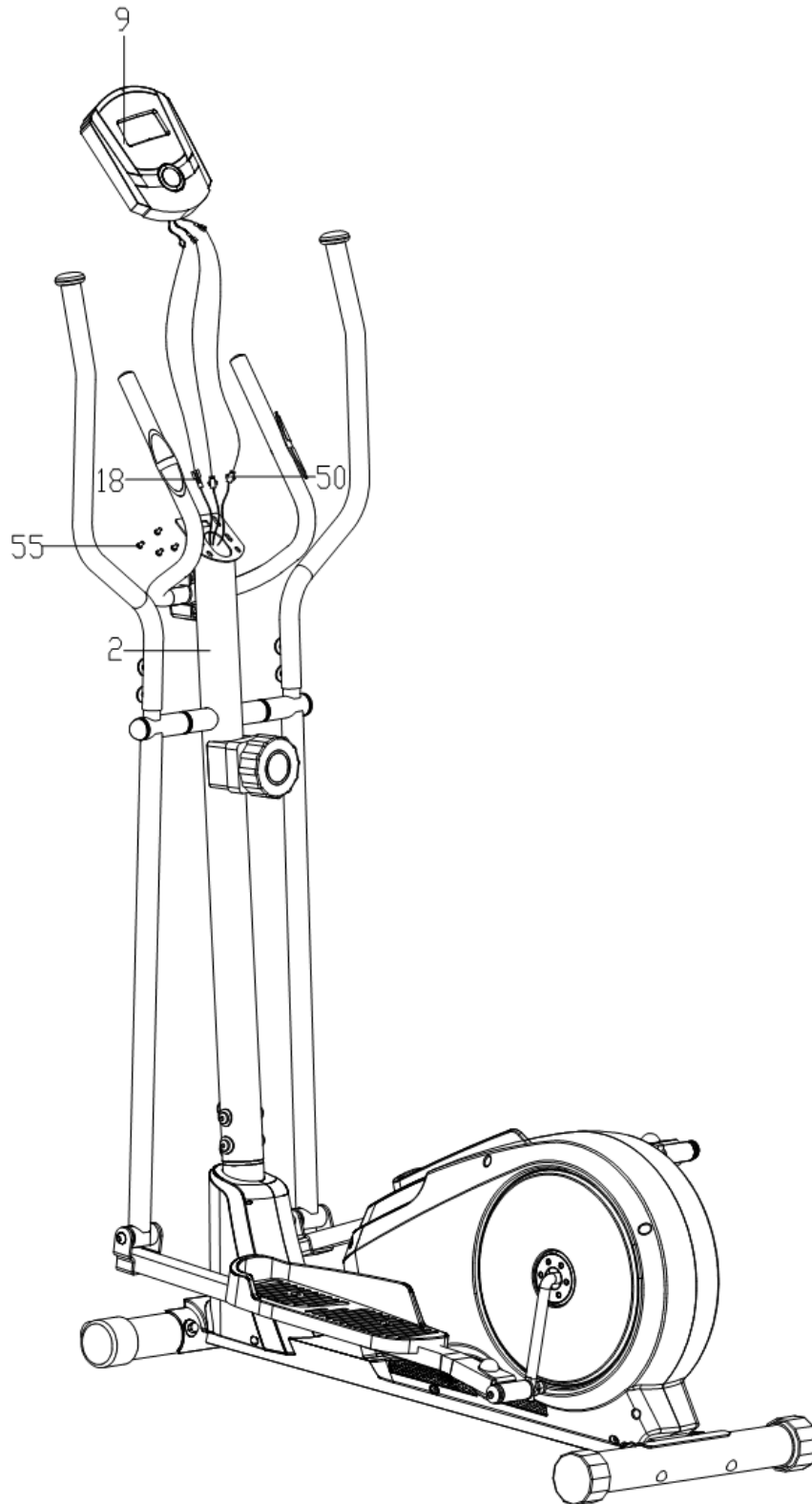
**STEP 4:**

1. Thread the pulse wire (50) through hole of handlebar post (2) then pull out from the hole of computer bracket at the top of the handlebar post (2). Then tighten the fixed handlebar (8) to the handlebar post (2) with inner hex bolts (51) and spring washers (52). At last, put on the clamp cover (53) properly.
2. Attach L/R handlebars (7L/R) to swing tubes (6L/R) and fix them with inner hex bolts (16), spring washers (52) and arc washers (44).



**STEP 5:**

Connect extension wire (18) and pulse wire (50) to the relevant wires of computer (9). Then fix the computer (9) to the computer bracket of handlebar post (2) with cross pan head screws (55) ..







GARLANDO SPA  
Via Regione Piemonte, 32 - Zona Industriale D1  
15068 - Pozzolo Formigaro (AL) - Italy  
[www.toorx.it](http://www.toorx.it) - [info@toorx.it](mailto:info@toorx.it)